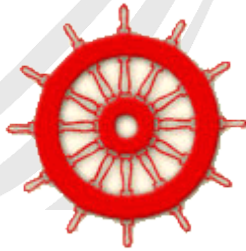




# S.O.L.A.S RESCUE BOAT SV-480

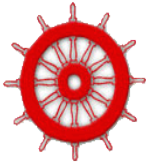




## CONTENTS

|                             |         |
|-----------------------------|---------|
| • GENERAL DESCRIPTION       | Page 03 |
| • TECHNICAL CHARACTERISTICS | Page 05 |
| • SOLAS EQUIPMENT           | Page 11 |
| • SOLAS CERTIFICATE         | Page 12 |
| • PHOTOS                    | Page 16 |





## **S.O.L.A.S. APPROVED RESCUE BOAT SV-480**

**In compliance with the latest S.O.L.A.S. requirements, the new rescue boat SV-480 lay out has been designed and approved in order to allow navigation by using an adapted driving position, as well as navigation with traditional outboard engine with tiller.**

**Approved for a 40 hp minimum engine power and 75 hp maximum engine power, the driving position will allow a more comfortable boat operation, improving the reaction time in case of emergency.**

**There is room enough on the deck to place the approved stretcher – mandatory installation- for injured person transportation. Besides, the boat has transverse seats for all the passengers and a bow locker to storage the necessary equipment.**





# SV-480

## TECHNICAL CHARACTERISTICS



# TECHNICAL CHARACTERISTICS

| <b>MODEL</b>                    | <b>SV-480</b>     |
|---------------------------------|-------------------|
| Length overall                  | 480 cm.           |
| Length inside                   | 354 cm.           |
| Beam overall                    | 214 cm.           |
| Beam inside                     | 110 cm.           |
| Maximum depth                   | 100 cm.           |
| Max. Tube $\varnothing$         | 51 cm.            |
| No. independent compartments    | 5+1               |
| Max. authorized motor power     | 40/50/60 or 75 CV |
| Engine shaft type               | Long              |
| Max. authorized paid load       | 690 kg.           |
| Approx. weight of boat          | 250 kg.           |
| Approx. weight with max. charge | 940 kg.           |
| Max. authorized No. of persons  | 6                 |
| Approval                        | S.O.L.A.S.        |



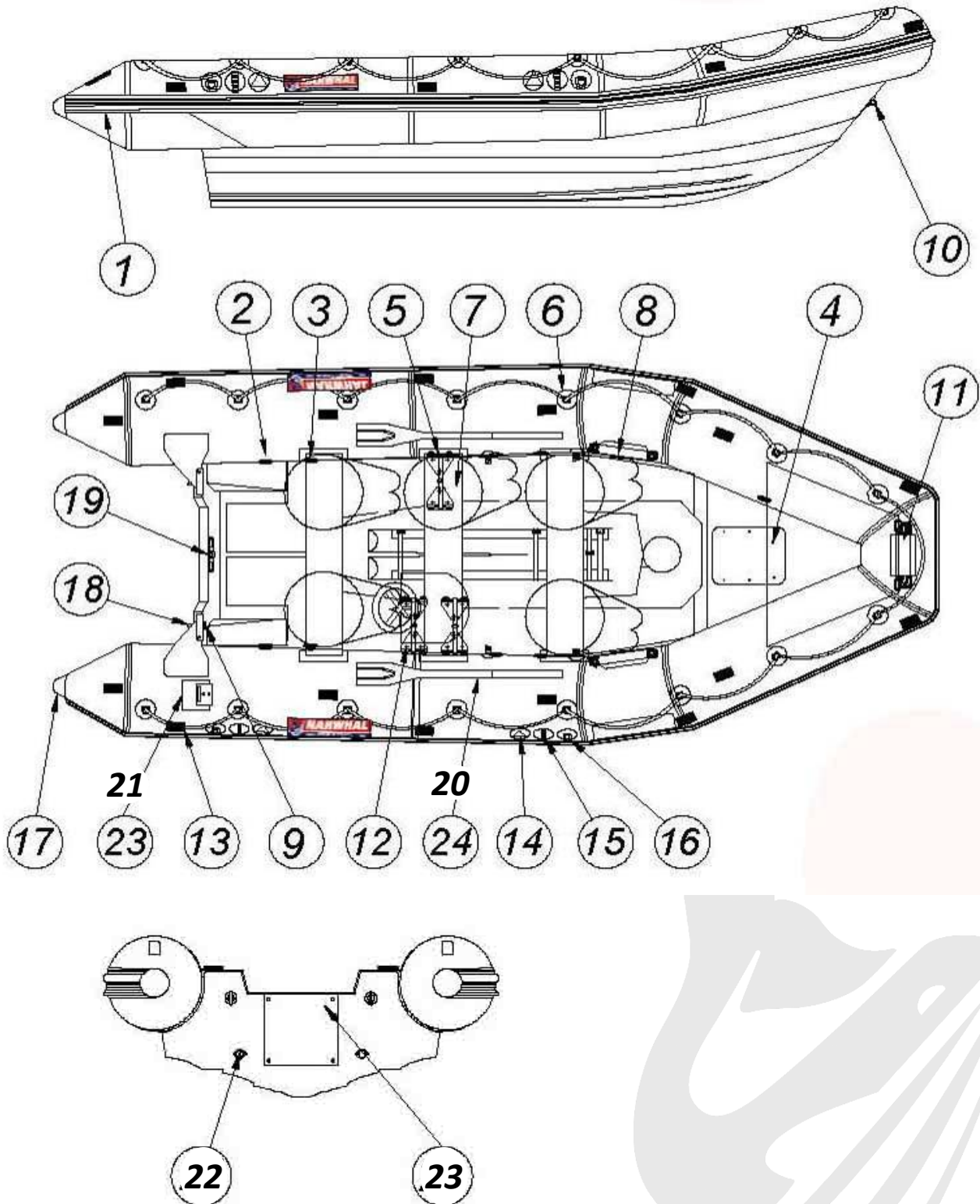
## PICTURE OF THE SV-480 MODEL



- TUBE IN PU (POLYURETHANE COLOUR ORANGE)
- PRFV REINFORCED HULL WITH FIREPROOF RESINS



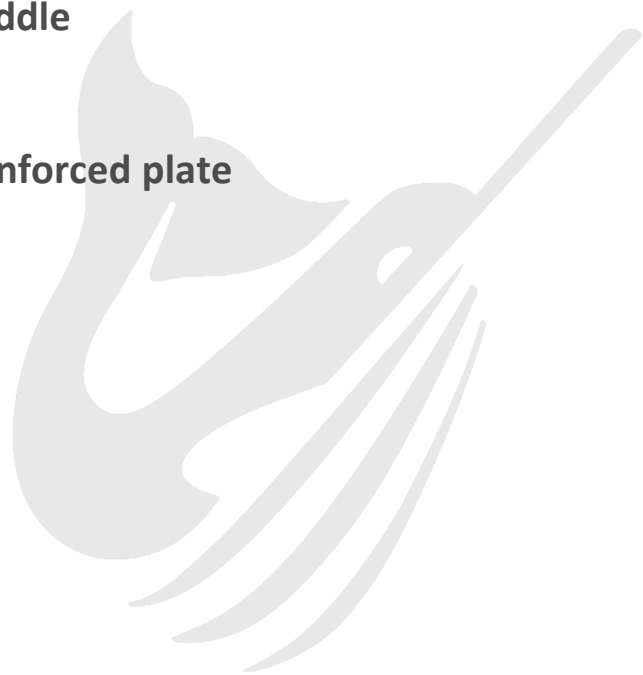
## STANDARD EQUIPMENT FOR SV-480





## STANDARD EQUIPMENT FOR SV-480

1. Wide rubbing strake fender
2. Automatic relief valves
3. Reinforced inflation/deflation valves
4. Bow locker for equipment
5. Retainer for fuel tank
6. Float quoit line holder set
7. Foldable fisherman benches
8. Foat quoit line holder set
9. Lifting rings
10. Mooring towing rings
11. Line holder
12. Retainers for batterie
13. Reflective tape
14. Righting labels
15. Righting line holder
16. Righting line ring
17. Reinforced stern cones
18. Towing ring
19. Aluminium in-transom reinforced plate
20. Aluminium boat hook paddle
21. Fitting for position light
22. Towing rings
23. Wooden out-transom reinforced plate





# FINISHING DETAILS



A.



B.



C.

- A. Foldable benches
- B. Lifting rings
- C. Reinforced rubbing strake fender
- D. Bow view with bow mooring line-guide PVC
- E. Stern view, reinforced stern cones and reinforced plate for engine
- F. Bow locker



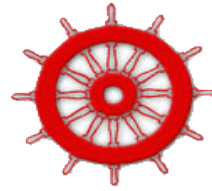
D.



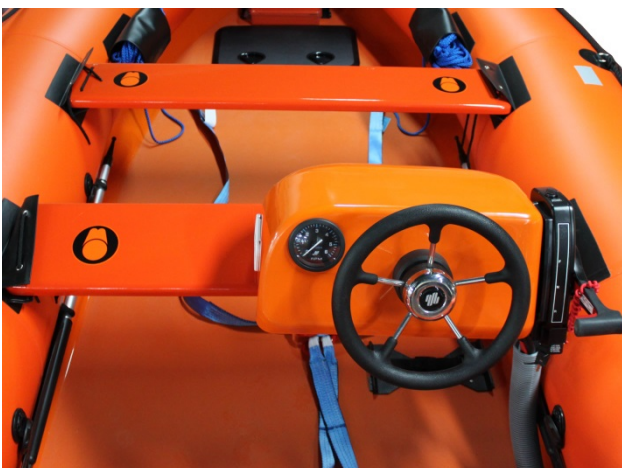
E.



F.

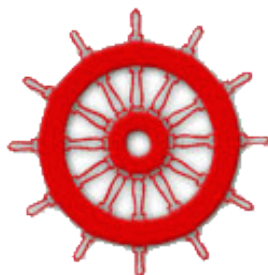


## OPTION: SMALL CONSOLE FOR REMOTE STEERING





## S.O.L.A.S. EQUIPMENT



# S.O.L.A.S. EQUIPMENT SV-480

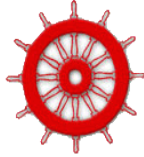


- |     |                               |     |                                   |
|-----|-------------------------------|-----|-----------------------------------|
| 1.  | 1 Four-legged lifting sling   | 13. | 1 Compass                         |
| 2.  | 2 Righting line               | 14. | 1 Position light with 3 V battery |
| 3.  | 1 Boat cover                  | 15. | 1 First aid kit                   |
| 4.  | 1 Boarding ladder             | 16. | 1 Whistle                         |
| 5.  | 1 Repair Kit                  | 17. | 2 Thermal protective aids         |
| 6.  | 1 Bow release device          | 18. | 2 Life saving quirts              |
| 7.  | 1 Footpump                    | 19. | 2 Aluminium boat-hook paddles     |
| 8.  | 1 line for hauling raft (50m) | 20. | 1 Knife                           |
| 9.  | 1 Radar reflector             | 21. | 1 Bailer                          |
| 10. | 1 Searchlight 12V 59 W        | 22. | 2 Sponges                         |
| 11. | 1 Fire-extinguisher           | 23. | 1 Floating anchor                 |
| 12. | 1 Torch and spares            |     |                                   |



# S.O.L.A.S. CERTIFICATES SV-480





## S.O.L.A.S. CERTIFICATE FOR SV-480

**DNV·GL**

Certificate No:  
**MED-B-9278**  
Item No:  
**A.1/1.43**  
Job Id:  
**344.1-000329-4**

### EC TYPE EXAMINATION CERTIFICATE

Application of: Council Directive 96/98/EC of 20 December 1996 on Marine Equipment as amended by directive 2012/32/EU, issued as "Forskrift om Skipsutstyr" by the Norwegian Maritime Directorate. This Certificate is issued by DNV GL under the authority of the Government of the Kingdom of Norway.

**This is to certify:**

**That the Rigid/inflated rescue boats**

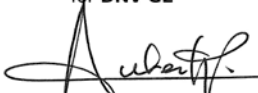
with type designation(s)  
**Narwhal SV-480**

Issued to  
**NARWHAL BOATS S.L.**  
**Mos Pontevedra, Spain**

is found to comply with the requirements in the following Regulations/Standards:  
**Annex A.1, item No. A.1/1.43 and Annex B, Module B in the Directive. SOLAS 1974 as amended, Regulation III/4, III/21, III/31, III/34 & X/3 LSA Code and 2000 HSC Code 8**

Further details of the equipment and conditions for certification are given overleaf.

**Høvik, 2014-09-01**  
for DNV GL

  
**Marianne Strand Valderhaug**  
Head of Department




Notified Body No.: **0575**

DNV GL local office:  
**Vigo**

This Certificate is valid until  
**2015-08-01**



  
**Tessa Biever**  
Surveyor



The Certificate is subject to terms and conditions overleaf. Any significant changes in design or construction of the product, or amendments to the Directive or Standards referenced above may render this Certificate invalid. The product liability rests with the manufacturer or his representative in accordance with Council Directive 96/98/EC, as amended. The Mark of Conformity may only be affixed to the product and a Declaration of Conformity may only be issued when the production/product assessment module referred to in the council directive, is fully complied with.





# QS-CE CERTIFICATE

**DNV·GL**

## QS - CERTIFICATE OF ASSESSMENT - EC

Certificate No:  
**MED-D-1970**  
Item No:  
**A.1/1.43**  
Job Id:  
**344.1-000695-3**

Application of: Council Directive 96/98/EC of 20 December 1996 on Marine Equipment as amended by directive 2012/32/EU, issued as "Forskrift om Skipsutstyr" by the Norwegian Maritime Directorate. This Certificate is issued by DNV GL under the authority of the Government of the Kingdom of Norway.

### This is to certify:

**That the Quality System for the Rigid/inflated rescue boats**

with type designation(s) as specified in the Appendix to this Certificate

Issued to

**NARWHAL BOATS S.L.**  
Mos Pontevedra, Spain

is found to comply with the requirements applicable to it. The quality system for the product, defined in Annex A.1, Item No. A.1/1.43, has been assessed with respect to the procedure of conformity assessment described in Annex B, Module D in the directive.

### Limitations:

Modifications made to the Quality System shall immediately be reported to Det Norske Veritas order to examine whether this Certificate remains valid. Annual periodical audits will be conducted to ensure the validity of the Certificate.

Høvik, 2014-09-16  
for DNV GL

for **Marianne Strand Valderhaug**  
Head of Department



Notified Body No.: **0575**

DNV GL local office:  
**Vigo**

This Certificate No. **2014-09-16**



Certificate No: **MED-D-1970**  
Item No: **A.1/1.43**  
Job Id: **344.1-000695-3**

### APPENDIX, REV. NO. 0

**QS - Certificate of Assessment - EC, Certificate no. MED-D-1970**

| Type designation | EC Type-Examination Certificate No. | Expiry date |
|------------------|-------------------------------------|-------------|
| NARWHAL SV-420   | MED-B-9277                          | 2015-01-08  |
| NARWHAL SV-480   | MED-B-9278                          | 2015-01-08  |

The manufacturer complies with the Council Directive 96/98/EC on Marine Equipment and is allowed to affix the Mark of Conformity followed by the DNV identification number 0575 and the two last digits of the number of the year in which the product is produced.

Example: 0575/14

The manufacturer shall issue a Declaration of Conformity for each product with reference to the EC Type-Examination Certificate and this QS - Certificate of Assessment - EC.

Place and date: Høvik, 2014-09-16

for **DET NORSKE VERITAS AS**

**Surveyor**

Name in block letters:  
**Tessa Biever**



The Certificate is subject to terms and conditions overleaf. Any significant changes in design or construction of the product or the standards referenced above may render this Certificate invalid. The product liability rests with the manufacturer in accordance with Council Directive 96/98/EC, as amended.

Form code: MED.Da      Revision: 2014-07      www.dnvgl.com  
© DNV GL 2014. DNV GL and the Horizon Graphic are trademarks of DNV GL AS.



## PHOTO GALLERY





# PHOTO GALLERY

